

SCHEME A.2 (NUMBERS BELOW ARE APPROXIMATE BASED ON COST PER SF MULTIPLIERS)

TOTAL WITH FINISHED LOWER LEVEL 28,500 SF x \$450/SF
 = \$12,825,000

MAIN LEVEL ONLY 17,800 SF x \$450/SF
 = \$8,010,000

LOWER LEVEL (UN-FINISHED) 10,600 SF x \$200/SF
 = \$2,120,000

TOTAL WITH UNFINISHED LOWER LEVEL
 = \$10,130,000

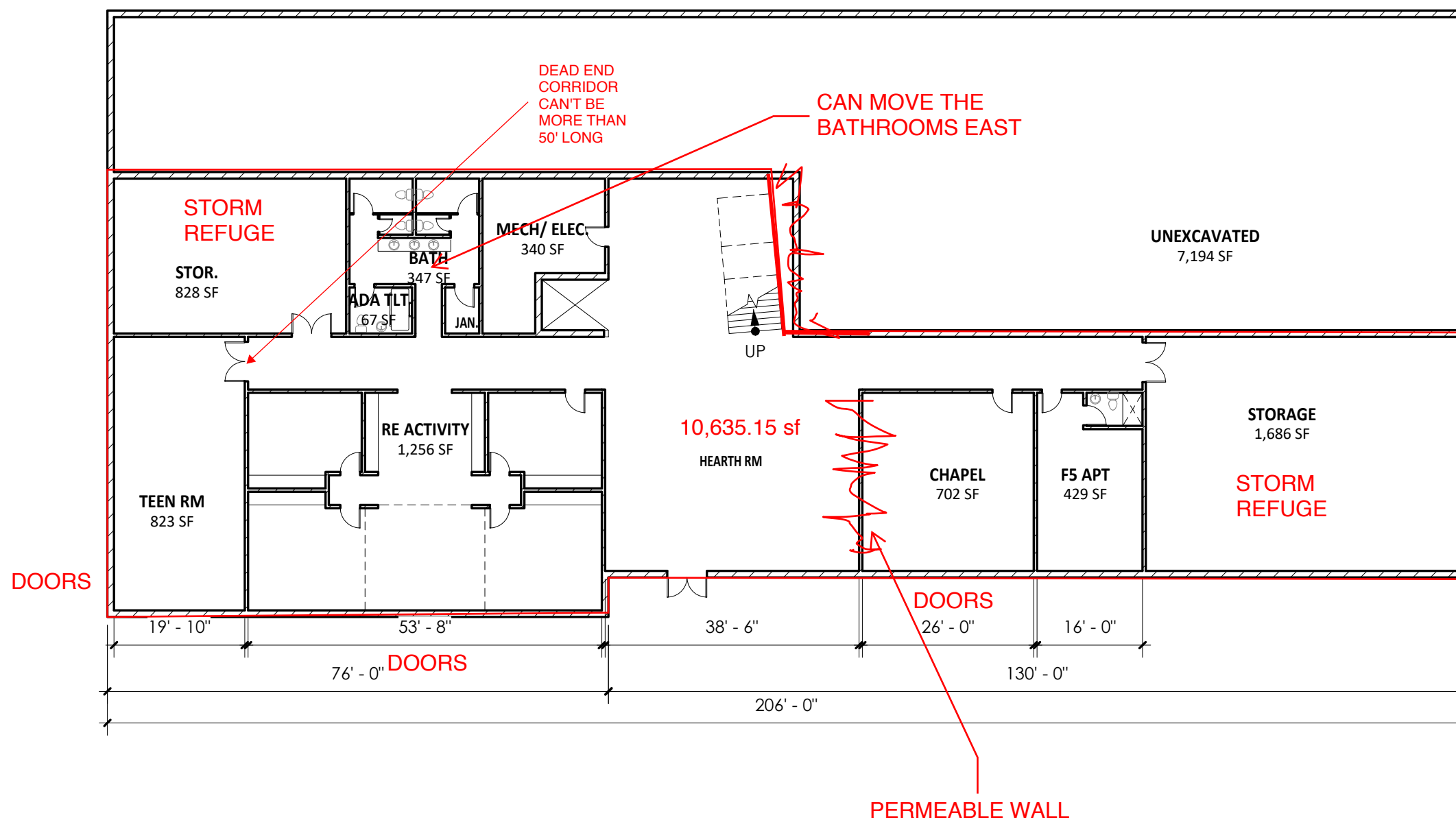
SCHEME A.2 (NUMBERS BELOW ARE APPROXIMATE BASED ON COST PER SF MULTIPLIERS)

TOTAL WITH FINISHED LOWER LEVEL 28,500 SF x \$450/SF
=\$12,825,000

MAIN LEVEL ONLY 17,800 SF x \$450/SF
=\$8,010,000

LOWER LEVEL (UN-FINISHED) 10,600 SF x \$200/SF
=\$2,120,000

TOTAL WITH UNFINISHED LOWER LEVEL
=\$10,130,000



WE WILL UPDATE THE VARIOUS SPACES AND BATHROOMS, ADD DOORS, WINDOWS, DRINKING FOUNTAINS, ETC. - ONCE WE SETTLE UPON A GENERAL DIRECTION

